



# PREMIER MEETINGS & EVENTS

## THE BENJAMIN

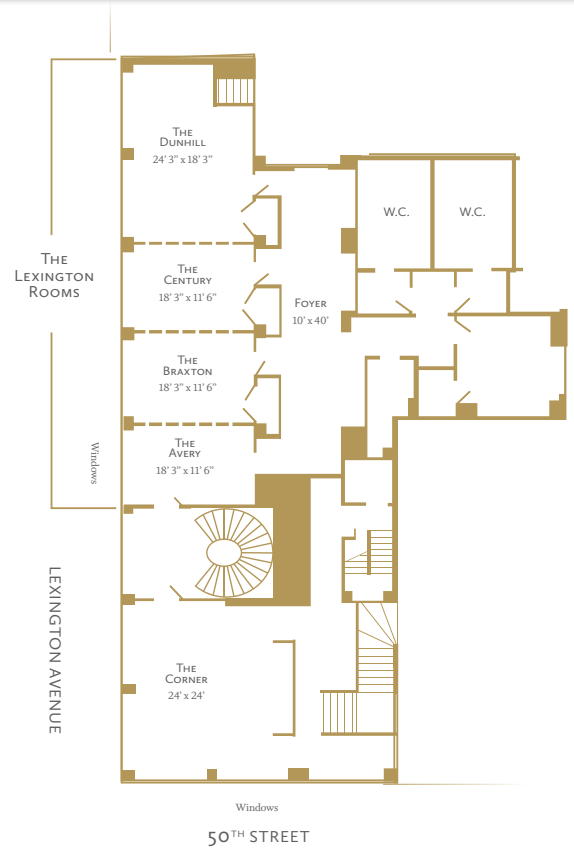
### SOPHISTICATED. CUSTOMIZABLE. SAVORY.

A dignified, visually stunning landmark hotel established in 1927, The Benjamin's legacy is one of prestige. Personalized corporate and social events large and small are executed flawlessly in its multiple event spaces, each featuring up-to-the-minute style and décor.

Both dining and catering at The Benjamin are an epicure's dream. All menus are created by Food Network's famous Iron Chef, restaurateur Geoffrey Zakarian. The National is one of *The New York Times*' 50 favorite restaurants, realizing Zakarian's vision of a contemporary New York grand café.



- 2,200 sq. ft. of brand new modular space; accommodates up to 100 guests
- Preferred room rates for groups
- Personal event managers
- Soundproof windows with city views
- Continually upgraded, advanced flat-screen TVs, Wi Fi, and video conferencing capabilities
- Private breakout rooms
- Chef Zakarian available for special appearances—please inquire for availability and fees



ROOM CAPACITY	SQ. FEET	CEILING HEIGHT	THEATER	CLASSROOM	RECEPTION	BANQUET ROUNDS	CONFERENCE	U-SHAPE CAPACITY	HOLLOW SQUARE	CRESCENT ROUNDS
The Lexington Rooms	1200	9'	100	63	150	100	50	44	46	56
The Dunhill	480	9'	40	24	50	40	22	20	24	24
The Century	240	9'	16	12	20	20	10	—	—	—
The Braxton	240	9'	16	12	20	10	10	—	—	—
The Avery	240	9'	16	12	20	10	10	—	—	—
The Corner	576	9'	50	24	75	48	26	21	30	21
Foyer	400	9'	—	—	50	—	—	—	—	—
VIP Suite	1100	9'	40	24	65	32	18	21	—	21
VIP Suite Terrace	380	—	—	—	25	—	—	—	—	—

